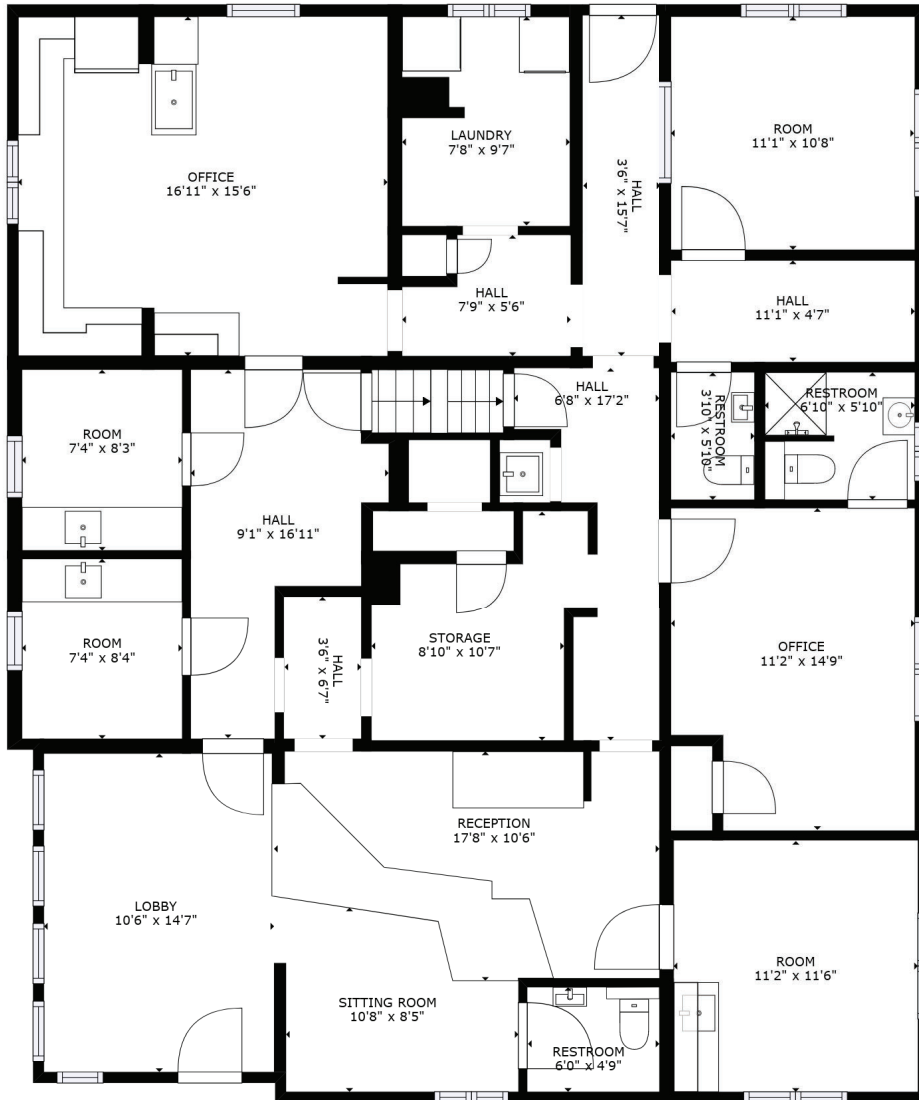


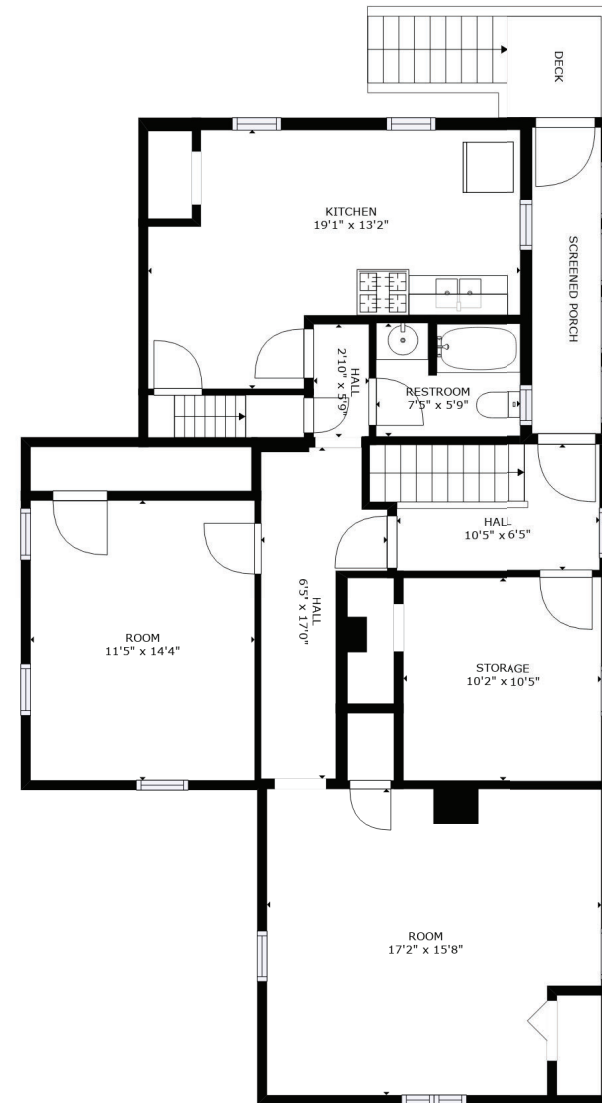
# 1 HOWELL STREET, WALTON., NY

BUILT 1942 | REMODEL 1990 BR 2+ BA 2 | 2 SQ FT 5000 LOT SZ 0.25 ac

## MAIN FLOOR



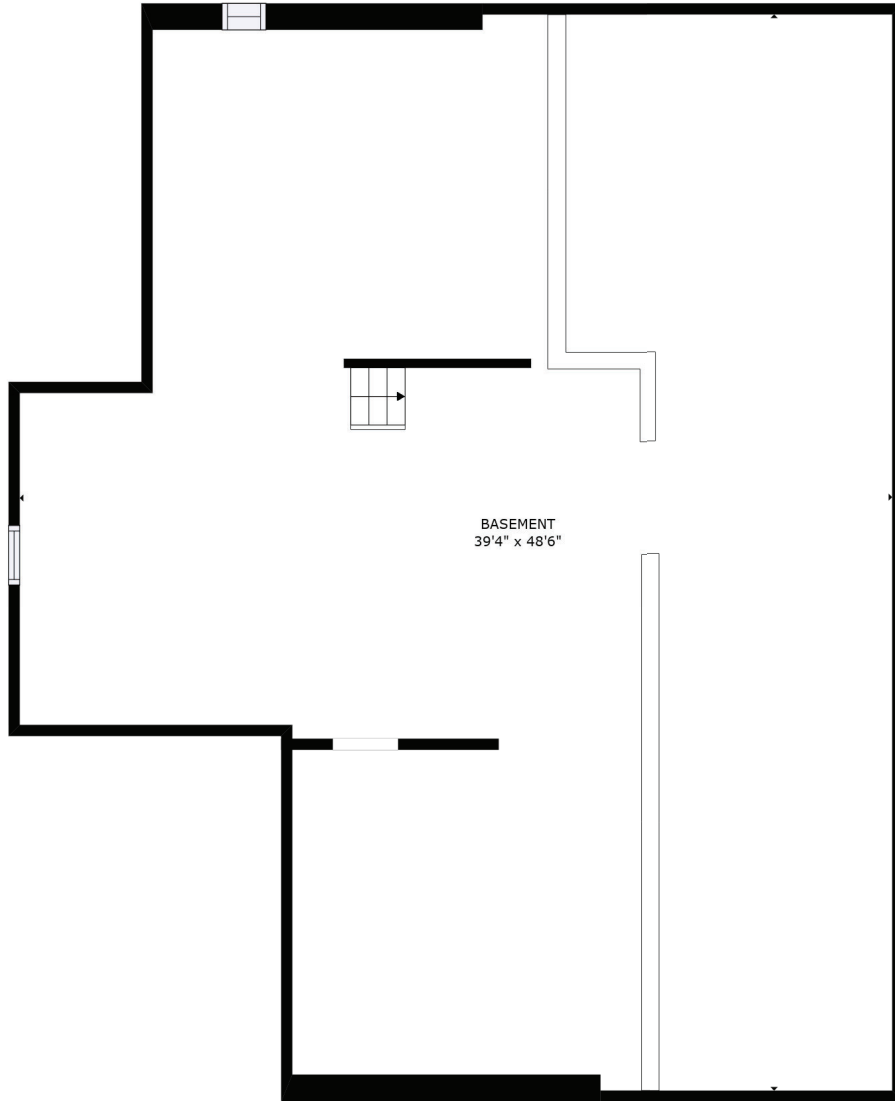
## APARTMENT



# 1 HOWELL STREET, WALTON., NY

BUILT 1942 | REMODEL 1990 BR 2+ BA 2 | 2 SQ FT 5000 LOT SZ 0.25 ac

BASEMENT



ATTIC

